



Rhinebeck  
New York

Dutchess County  
Summer  
Resort

The enclosed list of  
Hotels and Boarding Houses  
endorsed by  
Rhinebeck Business Men's  
Association



# Rhinebeck Business Men's Assn.

Rhinebeck, New York

## Members

PETER SNYDER	Hub Garage
LOUIS KIME	Meat Market
M. V. B. SCHRYVER	Lawyer and Insurance
DR. WM. TRAVER	Dentist
FRANK L. ASHER	Coal and Insurance
WM. C. HAINES	Life Insurance
LESLIE E. BATES	Real Estate and Insurance
HARRY SMILLIE & CO	Hardware
WILLIS J. PELLIS	Insurance
RHINEBECK FLORAL CO	Florist
A. LEE HUBER	Trucking
THEODORE DE LAPORTE	Retired
J. S. GIBSON	Lumber and Feed
HENRY SCHAAD	Meat Market
JACOB H. STRONG, Editor	Rhinebeck Gazette
A. C. TOOF	Mill Owner
IRVING STALEY	Building Contractor
R. R. RIKERT	Central Hudson Lines
CENTRAL HUDSON	Light Company
WM. M. SECOR	Monuments
P. E. COOKINGHAM	Hardware
WM. R. CARROLL	House Furnishings and Undertaker
THE BAKER DRUG STORE	Druggists
V. G. DEMAREST	Feed and Lumber
HUBERT GREENE	Farmer
J. WALTER SNYDER	Plumbing
JOHN D. LOWN	Coal and Feed
IRA H. BEACH	Superintendent of Roads
KARL VAN KEUREN	Painter and Decorator
HENRY C. GRUBE	House Furnishings, Funeral Director
L. L. STEWART	Fire Extinguishers
ETHAN COON	Florist
WM. TIEDER	Barber
WM. R. TREMPER	Supt. of Schools
BENSON R. FROST	Lawyer
D. W. SCHERMERHORN	Druggist
ROBERT MILROY	Garage
A. L. STICKLE	Rhinebeck Savings Bank
H. S. BULKELEY, M. D.	
A. C. HAEN	Jeweler
FRANK HERRICK	Retired
E. & A. GLYDE	Garage
HENRY CORNELIUS	Funeral Director
HERVEY KILMER	Florist
FRANK COOKINGHAM	Fruit Grower
CHAS. A. FRALEIGH	Painter
HARRY G. MILLER	Electrician
WM. E. COOK	Garage
SAMUEL LLOYD	Community Garage
W. K. BROWN	Manufacturer
JOSEPH GRIFFING	Music
V. A. COOKINGHAM	Milk Dealer
JAMES R. BOURNE	Farmer
REV. GABRIEL FARRELL, Jr.	
HANFORD MARQUET	Builder
LEE VAN VREDENBURGH	Supervisor
DONALD HASKINS	Groceries



Headquarters

## Rhinebeck Business Men's Association

Starr Institute Building

Rhinebeck, N. Y.

### OFFICERS

President	-	-	D. W. HASKINS
Vice President	-	-	HANFORD MARQUET
Treasurer	-	-	WM. TIEDER

### BOARD OF DIRECTORS

JAMES R. BOURNE	BENSON FROST
FRANK L. ASHER	A. C. HAEN
R. R. RIKERT	DONALD W. HASKINS
HANFORD MARQUET	H. S. BULKELEY
HENRY SCHAAD	D. W. SCHERMERHORN
L. L. STEWART	L. VAN VREDENBURGH

For Information

Address:

RHINEBECK BUSINESS MEN'S ASSOCIATION  
RHINEBECK, N. Y.

L. L. STEWART, Executive Secretary,

P. O. Box 34  
Rhinebeck, N. Y.

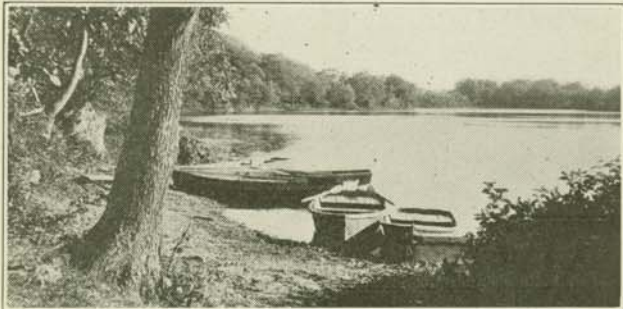
Tel. 235-R.

2018-002\_01.071



Among the hills of Northern Dutchess County, on the Albany Post Road, in what many travelers have called one of the most picturesque sections of New York State, Rhinebeck is located, high above the Hudson River and opposite the famous Catskill Mountains.

Accessibility: It is the ease with which Rhinebeck may be reached that adds to its attractiveness. Within a few hours' ride by motor on State Highway from New York City, or by train on the New York Central or West Shore R. R., a sail up the Hudson River on the Hudson River Day Line or Saugerties Steamboat.



The scenic beauty and well kept estates in and around Rhinebeck add to its popularity as an ideal place in which to spend your summer vacation.

A day or week spent among the wooded hills and near the numerous lakes surrounding Rhinebeck will be an experience unique in any life. Here one may enjoy all the pleasures of "roughing it" and only a gunshot away find all the pleasures and comforts of a modern home.

Nature lovers may here have solitude amid surroundings little changed since the days when the Indian was the only inhabitant of the country. For Rhinebeck is sit-

uated in a section of the State which has much that is of historical interest for its background, a country of traditions and thrills.



To those who would follow in the footsteps of Isaac Walton, there is fishing in season, many lakes and streams having been stocked with trout, pickerel, bass, perch and other fresh water fish.

A journey over the snow-covered hills in winter on snowshoes or skis would be an experience well worth trying by one who loves "the great open spaces" in that season.

Come to Rhinebeck in the Spring when nature is most enticing in her loveliness. Come in the summer when she offers relief from the heat and congestion of the city. Find happiness and pleasure here in the Fall and stay throughout the Winter season when the activities of the village seem at their very height.



# RHINEBECK

## THE VIOLET TOWN

Few towns are as favored industriously as is Rhinebeck. The industry that supports it is important, unique, employs many hands, and yet does not spoil the village with unsightly factories. Rhinebeck is THE Violet town of the United States and as such has been known for many years.

For the information of those who are interested in Rhinebeck a short resume of the history, importance and uniqueness of Violet Growing is presented here.

### *History:*

The Violet industry had its beginnings in a commercial way as far back as 1875 when the then rare flower was grown in cold frames in Rockland County, N. Y. By 1885 the growing of Violets as a definite industry was established in Poughkeepsie and by 1888 its beginnings were seen in Rhinebeck. As grower after grower erected houses and gathered in the "shekels" the raising of Violets became almost a fever until in 1908 there were 136 separate establishments growing Violets and employing from one to five hands.

Overproduction was the natural result and from that date on for ten years the growers dropped out one by one until today there are barely 75 growers in the section embracing Rhinebeck and Red Hook. It is felt, however, that the Violet is again coming into the ascendancy, and while none of the growers are getting rich today, it is possible by hard work, good fortune and economy to make a fair living.

### *Importance:*

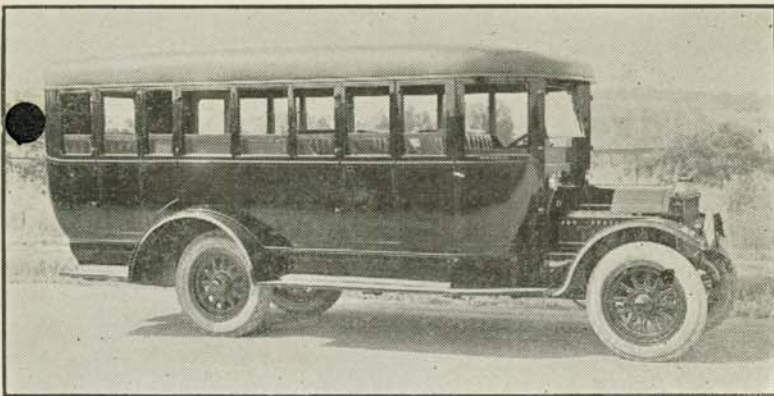
From the facts stated it will be obvious that the industry is very important to the village. It is next to impossible to estimate the number of Violets shipped in any one year but some idea may be gained when it is said that

one grower alone at Easter ships between 600,000 and 1,250,000 blooms.

The Rhinebeck Violets go to every state in the Union east of the Mississippi and sometimes farther. Many of the flowers go first to the big distributing points like Chicago and Baltimore and New York, while a large share are shipped directly to the retail florists in the thousands of cities.

### *Uniqueness:*

The question is often asked as to why the Violet grows better in Rhinebeck than elsewhere but this is hard to answer. The most experienced grower would hardly attempt to say but it is evident that there is some condition of climate and soil combined, that is the cause. The variety generally grown is the fragrant double blue sort known as "Marie Louise" which is superior in size, vigor and keeping qualities to any others. New sorts of single and semi-double varieties have recently been introduced from England but have not yet been accepted by the growers as being better commercial Violets. It is most unfortunate for the visitors to Rhinebeck that the summer time is not the time for picking Violets but a trip here in February and March would be well worth while to see the houses a mass of color and to smell the fragrance on a bright day that fairly pervades the air for miles around the village.



**TWILIGHT BUS LINE, INC.**  
**RHINEBECK, N. Y.**

Rhinebeck Office 224-R      Poughkeepsie 421

**Daylight Saving Time**

Most direct route to Rhinebeck, N. Y., Dutchess County's most popular summer resort. Take Hudson River Day Line Boat to Poughkeepsie. Bus meets boats right at pier. Beautiful scenic trip.

Pierce-Arrow bus.

	Week Days		x	x	
	A. M.	A. M.	P. M.	P. M.	P. M.
Southbound					
Leave Red Hook	7.30	9.30	12.15	2.15	
" Rhinebeck	7.45	10.00	12.30	2.45	4.00
" Staatsburg	8.00	10.15	12.45	3.00	4.15
" Hyde Park	8.10	10.25	12.55	3.10	4.25
Ar. Poughkeepsie	8.30	10.45	1.15	3.30	4.45
Northbound			x	x	
Lv. Poughkeepsie	9.00	11.00	2.00	4.00	5.00
Arrive Hyde Park	9.15	11.15	2.15	4.15	5.15
" Staatsburg	9.30	11.30	2.30	4.30	5.30
" Rhinebeck	9.45	11.45	2.45	4.45	5.45
" Red Hook	10.15	12.00	3.00	5.15	6.00

**Saturdays Extra**

Southbound Leave:

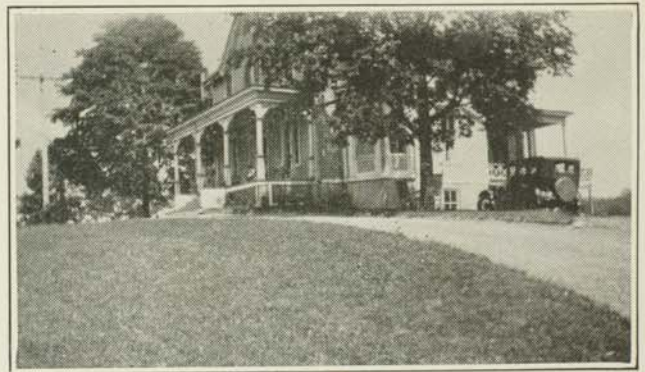
Red Hook - Rhinebeck - Staatsburg - Hyde Park  
 6.00 P.M. 6.30 P.M. 6.45 P.M. 7.00 P.M.

Northbound, Leave Poughkeepsie 11.00 P. M.

**Sunday**

	A.M.	x	x
	A.M.	P.M.	P.M.
Southbound			
Leave Red Hook		12.00	6.00
" Rhinebeck	8.15	12.30	6.30
" Staatsburg	8.30	12.45	6.45
" Hyde Park	8.45	12.55	6.55
Ar. Poughkeepsie	9.00	1.15	7.15
Northbound		x	
Lv. Poughkeepsie	10.45	2.00	9.00
Arrive Hyde Park	11.00	2.15	9.15
" Staatsburg	11.15	2.30	9.30
" Rhinebeck	11.30	2.45	9.45
" Red Hook	11.45	3.15	10.00

Trips marked (x) make connections with Hudson River Day Line Boats.



**Adair House**  
**Rhinecliff, N. Y.**

*Open: May-November*

Our house is situated on the east bank of the glorious old Hudson, in the village of Rhinecliff, N. Y. It is located amidst beautiful scenery and swept by fresh mountain air, high up on the cliffs.

Churches, stores, station and ferry boat all within walking distance.

Mail three times daily; telephone, electric light, all modern improvements, dancing, tennis, swimming, fishing. Beautiful country walks and drives around the Hudson river colony.

Our rooms are large and airy. Our table is supplied with the best the market affords. Our aim is to make our guests completely satisfied and to surround them with home comforts.

Large porches, beautiful lawns, parking for automobiles.

Our rates are \$16-\$18 per week and we accommodate 50 guests. If you desire to try us write

F. & C. ADAIR

ADAIR HOUSE, RHINECLIFF, N. Y.

Transportation free.

**HOW TO REACH ADAIR HOUSE**

By train from New York Central Station to Rhinecliff.

By boat to Kingston Point, cross Hudson River on ferry to Rhinecliff.



Here's the place to stop  
when motoring in the  
Hudson Valley

*Quiet Surroundings*  
*Historic Associations*  
*Beautiful Garden*  
*Superior Cuisine*  
*Every Convenience*  
*Moderate Rates*

*Under New Management*

Send for illustrated prospectus  
and rates

**Beekman Arms**

Rhinebeck, N. Y.

Under same management

*Hotel Campbell*

Poughkeepsie, N. Y.

WORTHY OF YOUR PATRONAGE



Cedar Heights Farm, Rhinebeck, N. Y.

**Cedar Heights Farm**

Mrs. W. R. Marquet, Proprietor  
Rhinebeck, N. Y.

*Season July 1st to October 1st*

*20 guests*

Is situated three miles from the village of Rhinebeck-on-Hudson, and in view of the famous Catskill Mountains. We have light, airy rooms. Large, cool dining room, spacious porch and shady lawn. High altitude. Air dry and pure.

Table supplied with fresh vegetables, eggs, milk and butter, home cooking and baking.

Sitting room, telephone and daily mail.

\$14.00 Terms: ~~\$12.00~~ per week in advance. Answer promptly if you desire a room held. Christian families desired.

Cedar Heights Farm can be reached by the New York Central Railroad to Rhinecliff. Taxi service to house.

Hudson River Day Line to Poughkeepsie and bus from Poughkeepsie to Rhinebeck. Taxi to house.

Hudson River Day Line to Kingston. Ferry from Kingston to Rhinebeck and taxi to house.



## The Colonial Cottage

MRS. J. J. SLEIGHT, HOSTESS

The ideal stopping place for commercial and auto travelers.

Centrally situated at 52 Montgomery street, on the Albany Post Road. Comfortable beds, restful and clean. Hot and cold running water, baths, electric lights, telephone.

Returning guests testify to the satisfactory service offered by the old established and popular rooming Cottage.

Open all year round. Rates reasonable.

Telephone 220-W

Rhinebeck, N. Y.



## COTTAGE FARM

MRS. E. A. STALEY  
SEASON MAY 1st TO  
NOVEMBER 1st  
RHINEBECK, N. Y.

An ideal spot in the country to spend your vacation. Located  $\frac{1}{2}$  mile out from historical Rhinebeck Village on good road. Situated on high ground, with large shady lawn. Plenty of fishing in nearby lakes and a good stream close at hand. Several dance pavilions in the community and other amusements.

Accommodations for 40 guests. Pleasant airy rooms. Home cooking. Plenty of milk and cream from tuberculin tested herd. Vegetables from our own farm, and eggs from our own henneries.

Rates: Per week—Adults \$14.00; Children, according to age. Christians only. Auto accommodated free.

We offer a substantial reduction for the season (at least 8 weeks.) Our car will meet guests at depot, ferry landing or bus office, on order.

Churches of all denominations: Methodist, Reformed, Episcopal, Lutheran, Baptist and Catholic are located in the village.

Cottage Farm can be reached by the New York Central to Rhinecliff. Taxi service to house.

Hudson River Day Line to Poughkeepsie. Bus service from Day Line pier to Rhinebeck. Taxi to house.

Hudson River Day Line to Kingston. Ferry to Rhinecliff. Taxi to house.



## Dutchess Inn

On Albany Post Road 90 miles  
from New York

*An ideal place to spend the summer  
and rest*

Accommodations for Transient and Summer Boarder.

For Rates and Reservations, address

### Mrs. I. Divers

Season: April 1 to December 25

Tel. 348



## “East End House”

Mrs. Charles Heeb, Prop

SEASON—Open year round

Rhinebeck, N. Y.

Located in village, within five to ten minutes walk of Catholic and all Protestant churches. Good fishing and swimming in nearby lakes. Electric lights, bath, water and telephone service; home cooking, Christian table. Accommodation, about twelve to fifteen guests. Rates per week, \$16.00. Children according to age.

East End House can be reached by the New York Central to Rhinecliff. Taxi service to house.

Hudson River Day Line to Poughkeepsie. Bus service from Day Line pier to Rhinebeck.

Hudson River Day Line to Kingston. Ferry to Rhinecliff. Taxi to house.





## FAIRVIEW FARM

Mrs. A. C. Marquet, Proprietor  
Rhinebeck, N. Y.

*Season June 15 to September 15*

An ideal spot to spend your vacation, located about four miles from Rhinebeck Village. High elevation with large shady lawn. Accommodate from 14 to 18 guests. Nice pleasant airy rooms. Home cooking, plenty of milk, cream, vegetables and fruits of all kinds in their season from our own farm.

Rates per week: \$14.00 up. Children according to age. Christians preferred.

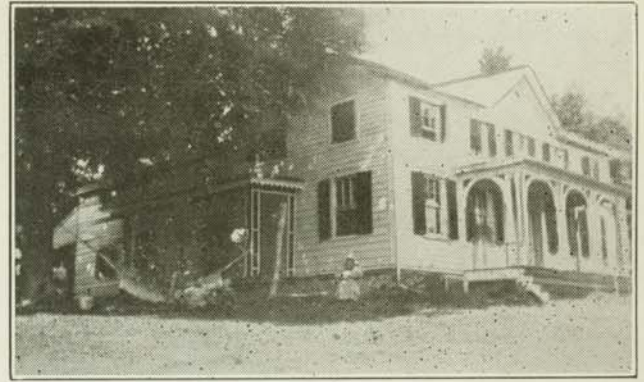
Churches of all denominations: Methodist, Reformed, Episcopal, Lutheran, Baptist and Catholic are located in the village and Lutheran near by.

---

Fairview Farm can be reached by the New York Central Railroad to Rhinecliff. Taxi service to house.

Hudson River Day Line to Poughkeepsie and bus from Poughkeepsie to Rhinebeck. Taxi to House.

Hudson River Day Line to Kingston. Ferry from Kingston to Rhinebeck and taxi to house.



## HEMLOCK TERRACE RHINEBECK, N. Y.

Open All Year

HERMAN BEST, Prop.

Telephone 26-F-4, Rhinebeck, N. Y.

Hemlock Terrace is located one and one-half miles from Rhinebeck Village. The house is situated on high ground overlooking the famous Catskill Mountains. Large, airy rooms, improvements, two verandas, large shady lawns.

Plenty of milk from our own tuberculin tested herd. Vegetables, fruits and eggs from our own farm. German home cooking.

Accommodations for twenty-five guests.

Rates: \$15.00 a week. Children \$6.00 to \$10.00 according to age.

Christian clientele only.

Churches of all denominations: Baptist, Catholic, Episcopal, Lutheran, Methodist and Reformed, are located in the village.

---

Hemlock Terrace can be reached by the New York Central Railroad to Rhinecliff. Our own car will meet guests at station upon request.

Hudson River Day Line to Poughkeepsie and bus from Poughkeepsie to Rhinebeck. Car to house.

Hudson River Day Line to Kingston. Ferry from Kingston to Rhinebeck and car to house.



## Locust Grove Inn and Cottage

Rhinebeck, New York

Mrs. Roy Decker, Prop.

Telephone 171-M

*A Home Away From Home*

A quiet restful place to spend your vacation. Located in the historical Village of Rhinebeck, situated on high elevation with beautiful mountain view. Large shady lawn. It is about ten minutes' walk to the village.

Accommodations for forty guests. Pleasant airy rooms, electric lights, rooms with or without bath, or running water, telephone service. Home cooking. Plenty of milk and cream, fresh eggs and vegetables from our own place.

Rates, per week: Adults \$18.00 to \$25.00; Children \$6:00 to \$15.00.

Churches of all denominations: Methodist, Reformed, Episcopal, Lutheran, Baptist and Catholic, are located in the village.

Locust Grove can be reached by the New York Central Railroad to Rhinecliff. Taxi service to house.

New York-Albany bus passes the Inn daily.

Hudson River Day Line to Poughkeepsie. Bus service from Day Line pier to Inn.

Hudson River Day Line to Kingston. Ferry from Kingston to Rhinebeck and taxi to Inn.



## "THE MAPLES"

RHINEBECK, N. Y.

Not a boarding house; a home where rooms may be had by people desiring rest and quiet. Meals can be procured at nearby hotels, inns and restaurants.

Located near extreme north end of Montgomery street, surrounded by its 2 acres of grounds, overlooking the adjoining Astor meadowlands, with extensive view of Catskill Mountains. It combines the quiet and seclusion of the country with the conveniences of the city; telephone, electric light, mail delivered twice daily.

House contains 17 rooms, 2 bathrooms, with large piazzas. An ideal place to spend a restful week-end.

No children desired unless with parties for one night stay.

Auto parties north-bound, passing thru the village take left fork of road at gas filling station: the second house on the left, just beyond the Astor Gateway, is "The Maples".

Accommodations for 16 guests.

Rates for transients and week-end, \$3.00 per night for double room.

For terms for longer stay address

MRS. WM. H. B. OBRE  
RHINEBECK,  
NEW YORK  
Tel. 351



## “Maple Glen Farm”

FRED E. TRAVER

SEASON MAY 30 TO OCTOBER 15

RHINEBECK, N. Y.

An ideal home in the country to spend a restful vacation. Four miles from Rhinebeck village. Situated on high ground, large shady lawn, pleasant airy rooms. Home cooking, vegetables from own garden, milk and cream from tuberculin tested Guernsey herd.

Garage room.

Rates on application.

Protestant church five minutes walk.

Catholic church at Rhinebeck.

---

Maple Glen can be reached by the New York Central Railroad to Rhinecliff. Taxi to house.

Hudson River Day Line to Poughkeepsie and bus from Poughkeepsie to Rhinebeck. Taxi to House.

Hudson River Day Line to Kingston. Ferry from Kingston to Rhinebeck and taxi to house.



## Maple Lawn

Rhinebeck,  
Dutchess County, N. Y.

Mrs. Laura M. Velie, Prop.

Open All Year

A very pleasant and quiet place to spend your vacation.

Situated one-half mile north of Rhinebeck village. Nice large, airy rooms, improvements. Home cooking, milk, vegetables and eggs from our own farm. Telephone in house.

Accommodations for ten guests.

Rates per week: \$15.00 and \$18.00.

Christians preferred.

Churches of all denominations in village.

---

Maple Lawn can be reached by the New York Central Railroad to Rhinecliff. Taxi service to house.

Hudson River Day Line to Poughkeepsie and bus from Poughkeepsie to Rhinebeck. Taxi to House.

Hudson River Day Line to Kingston. Ferry from Kingston to Rhinebeck and taxi to house.

NEW MANAGEMENT

# THE NEW YORK

J. TRUCHE, PROP.

Rhinebeck,  
Dutchess County,  
New York

New York's Fine Vacation  
Spot

90 Miles from New York City

60 Miles from Albany

Easy to reach House



Open All Year

Accommodations for 35

Finely Situated

Very Healthy Surroundings

Rates \$18.00 per Week

Less than Week \$3 per Day

Tourists accommodated

\$3.00 Daily

## Nature Camp

NATURE CAMP is an established Christian camp for children, conducted by the management of Renzelter School. Open June 1-Sept. 30. Strict moral discipline combined with love and tender care.

Activities are — Nature Study, Swimming, Boating, Tennis, all forms of athletics, Gardening, Handcraft, Photography and Tutoring.



**Renzelter School, Rhinebeck, N. Y.**  
Accommodations for Tourists during the summer

Applications are accepted for all or part season.

Situated on Albany Post Road four miles south of Rhinebeck village, overlooking the majestic Hudson and towering Catskills.



For information write:  
**HAZEL M. SCHRYVER,**  
Principal  
Rhinebeck, N. Y.



## MAPLE PARK FARM

Rhinebeck, Dutchess County, N. Y.

Margaret Mohrmann, Proprietor

Telephone 195 Rhinebeck, N. Y.

*An Ideal spot to spend a restful vacation  
Christian clientele      Adults only*

MAPLE PARK FARM is situated in one of the most healthful and beautiful sections of Dutchess County, New York, one and one-half miles from the village of Rhinebeck on a good road.

The rooms are large, bright and airy, with high ceilings. There are all improvements, such as electric lights in every room, bath with hot and cold running water, telephone and piano. Two mails are received at the house daily. Excellent meals are served, Everything being home cooked; plenty of fresh eggs, milk, poultry, fruit, vegetables, etc., direct from the farm.

There are Protestant and Catholic churches near.

Our rates are \$15.00 and up per week. Transients \$3.00 per day.



## Orchard Home Farm

RHINEBECK, N. Y.

*Season June 15 to September 15*

Tilden Tallman, Proprietor

TO those who enjoy vacation life in the country, Orchard Home Farm offers ideal advantages at moderate cost. Located on a macadamized road two miles out from the historic Rhinebeck village, the house is situated on high ground, with large shady lawn and has a large porch.

For those who enjoy fishing, there is a trout stream nearby. Bathing nearby. We have accommodations for twenty guests. Rooms are all pleasant with electric lights. Home cooking. Milk and cream from our own dairy. Vegetables from our own farm, and eggs from our own henneries. Plenty of all kinds of fruit in season. Music and dancing.

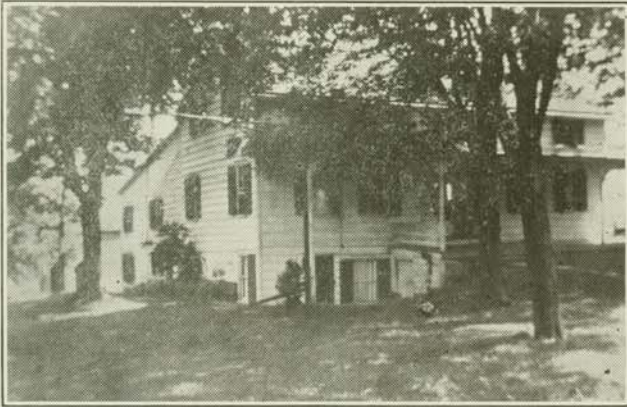
Rates per week: Adults \$14.00; children \$5.00 to \$8.00, according to age. Christians preferred.

Churches of all denominations—Methodist, Catholic, Reformed, Episcopal, Lutheran and Baptist, are located in the village.

Orchard Home Farm can be reached by the New York Central Railroad to Rhinecliff. Taxi service to house.

Hudson River Day Line to Poughkeepsie and bus from Poughkeepsie to Rhinebeck. Taxi to House.

Hudson River Day Line to Kingston. Ferry from Kingston to Rhinebeck and taxi to house.



## Round Pond Farms

Rhinebeck, N. Y.

H. C. Plate, Prop.

Tel. 200-F-3

Situated 5 miles east of Rhinebeck Village.

Elevation about 740 feet.

150 acres of land with private lake and woods. All water sports.

Milk, vegetables, fruit, eggs and chickens direct from farm.

An ideal place for a rest.

Rates on application.

Round Pond Farms can be reached by New York Central Railroad to Rhinecliff. Taxi service to house.

Hudson River Day Line to Poughkeepsie and bus from Poughkeepsie to Rhinebeck. Taxi to house.

Hudson River Day Line to Kingston. Ferry to Rhinebeck and taxi to house.



Telephone Clinton Corners, N. Y.

## Shady Lake Farm

EDWARD C. COX, Prop.

### New York's Ideal Vacation Spot

80 miles from New York, 60 miles from Albany. Open all year. Accommodation for fifty.

On large lake, finely situated, healthful surroundings, high elevation.

Rates: \$15.00 to \$17.50 per week. Less than week \$2.50 per day. Children \$4.00 to \$12.00 per week.

We are situated in a very nice country. High and healthy. Pleasant automobile drive from Rhinebeck to the farm through a very pretty and scenic country. A village town hall, church, store and several large camps in easy walking distance from house. Large lake on grounds. Boating, bathing, fishing, dancing and other amusements. House American plan. Good table.

Will say to persons enjoying nature's works, outdoor exercises, beautiful scenery, healthful recreation, boating, fishing, swimming, dancing, comfort and rest, we have it for them. We guarantee nothing more.

Established in 1900. With references to exchange when necessary.

Our automobile bus leaves Rhinebeck, Hub Garage, daily at 1.00 p. m. and 4.30 p. m.

Further information and illustrated booklet on application.

Shady Lake Farm can be reached by the New York Central Railroad to Rhinecliff. Taxi service to house.

Hudson River Day Line to Poughkeepsie and bus from Poughkeepsie to Rhinebeck. Taxi to House.

Hudson River Day Line to Kingston. Ferry from Kingston to Rhinebeck and taxi to house.



## SILVER LAKE FARM

WM. BARTLES, Prop.

*Season May 1st to November 1st*

RHINEBECK, N. Y.

An ideal spot in the country to spend your vacation, right on Silver Lake, where fishing, bathing and rowing may be had at all times. Seven miles east of Rhinebeck village, situated six hundred feet above sea level, with large shady lawn.

Accommodation for twenty guests. Large airy rooms, home cooking, plenty of milk and cream from tuberculin tested herd, vegetables from our own farm and eggs from our own henneries.

Telephone in house. Wonderful bathing beach and perfectly safe for children.

Rates per week: Adults \$15.00; Children \$10.00.

Christians preferred.

Churches of all denominations in village.

Dancing at house or nearby pavillions.

Silver Lake Farm can be reached by the New York Central Railroad to Rhinecliff. Taxi service to house.

Hudson River Day Line to Poughkeepsie and bus from Poughkeepsie to Rhinebeck. Taxi to House.

Hudson River Day Line to Kingston. Ferry from Kingston to Rhinebeck and taxi to house.



## Willowdell Farm

Mrs. E. A. Asher, Prop.

SEASON—May to November

Rhinebeck, N. Y.

An ideal spot in the country to spend your vacation. Located two miles out from the historic Rhinebeck village. Situated on high ground, with large shady lawn.

Accommodations for twenty-five guests. Pleasant airy rooms, home cooking and baking, plenty of milk and cream. Vegetables from our garden.

Rates, per week: Adults \$15.00 each; Children, \$8.00 and \$10.00 according to age. Christians preferred.

Churches of all denominations are located in the village.

Willowdell Farm can be reached by the New York Central to Rhinecliff. Taxi service to house.

Hudson River Day Line to Poughkeepsie. Bus service from Day Line pier to Rhinebeck. Taxi to house.

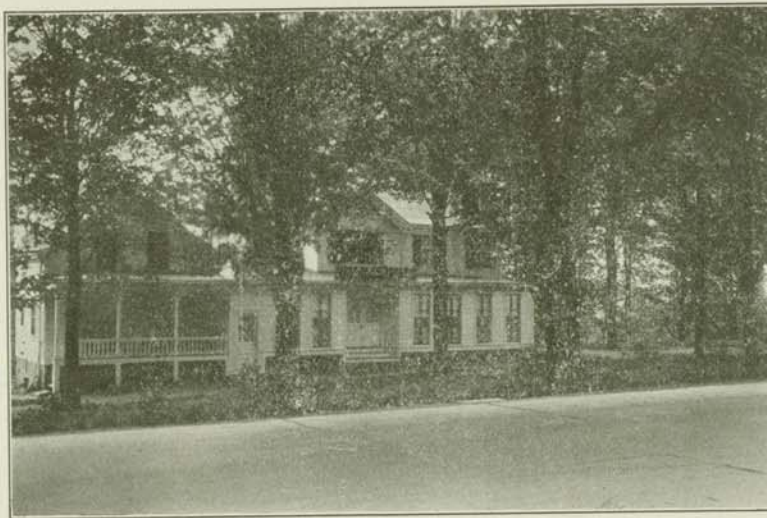
Hudson River Day Line to Kingston. Ferry to Rhinecliff. Taxi to house.

Wood-Lea House is open all year. With all modern improvements, including baths, toilets, sanitary plumbing, hot and cold water and can comfortably accommodate 30 guests. The rooms are large and airy and are arranged for the convenience of families. Only a limited number of children taken. One mail daily, R. F. D. This is a first class summer resort.

Commanding a magnificent view of the Hudson River, Catskill Mountains and surrounding country.

Central to all points of interest among which are—Rhinecliff, Ashokan Reservoir, Catskill Mountains, romantic Sleepy Hollow and Rip Van Winkle region, while the surrounding mountain sides are dotted with quaint and beautiful places for a day's outing.

Three and one-half hours from New York city by boat and rail route.



**THE WOOD-LEA HOUSE**

Charles Antony, Prop.

Rhinebeck, Dutchess County, N. Y.

Rates on application

The table is abundantly supplied with fresh vegetables, milk, poultry and eggs direct from the farm. Special chicken dinners.

The Albany Post Road (concrete) direct from New York city passes the door. Railroad, telegraph, post office, churches 15 minutes walk. Long distance and local telephones in house. Bowling, rowing and swimming nearby. Grounds are graded and shaded and have a tennis court and croquet ground.

New York Central Railroad to Poughkeepsie or Rhinecliff then by bus which passes the house or by taxi, or by Day or Night Boats to Poughkeepsie and then by bus to the house, or to Kingston Point then by ferry to Rhinecliff then by bus or taxi; or if previous arrangements are made the auto attached to the house will call at station or boat for a small fare.





## Rhinebeck Baptist Church

Cor. Livingston and Montgomery Sts.

Rev. R. C. Penney, Pastor

Parsonage, 3 Livingston St.

*"The Church of the Cordial Welcome"*

Sunday preaching services 10.30 A. M. and  
7.30 P. M.

Prayer meeting Thursday evening at 8 o'clock

Attention is called to the local press for  
special announcements and sermon topics.

Baptist preaching activities began in this section of New York State in 1796 or 97 by Robert Scott, who came to America from England in 1794. He was an intimate associate of the Wesleys and his name appears among the 100 signers of "The Deed of Declaration", signed in 1784 which was practically the founding of the Wesleyan Church of England. He effected the organization of the Church July 4th, 1821, serving as its pastor until his death in 1834.



## Church of the Messiah

Protestant Episcopal

Rhinebeck, New York

Gabriel Farrell, Jr., Rector

W. Raymond Randall, Organist

### SUNDAY SERVICES

8.00 A. M.—Holy Communion.

(Except 1st Sunday of each month)

10.45 A. M.—Morning Prayer and Sermon.

(Holy Communion 1st Sunday)

4.00 P. M.—Evensong, Address and Organ Recital.

(October to June only)

Services on Daylight Saving Time.

Vested choir with full musical program.

Hearty services lasting one hour.

WE INVITE YOU TO WORSHIP HERE



## Methodist Episcopal Church

Rhinebeck, New York

Rev. Jonas Inman, Pastor

Methodism in Rhinebeck began in 1788 with the first visit of the pioneer preacher Freeborn Garrettson. Here was his home for more than thirty years of his ministerial life, and here he is buried in the vault at the rear of the church, with his saintly wife, Catherine Livingston, and their daughter, Mary Garrettson of precious memory. This is one of the oldest Methodist churches of the Hudson Valley. The present attractive church is the fourth edifice of this historic and influential society, and was dedicated on February 14, 1900. Mrs. Frank Rikert, its organist and chorister, has the longest continuous record of service of any organist and chorister in the village, and possibly in the county. Mr. Elmer Coon is now serving for the thirty-ninth year as Superintendent of the Sunday school.

### SCHEDULE OF SERVICES

Sunday morning worship and sermon at 10.30, followed by Sunday School, with classes for all ages, including men and women at 11.45.

Evening worship and sermon at 7.30.

Thursday night meeting for prayer, testimony and Bible study at 7.30, in the chapel.

Strangers are always welcome.



## The Reformed Church Rhinebeck, N. Y.

Founded 1731

The Rhinebeck Reformed Church, mother of churches in our village, was founded in the year 1731. The original church stood on the ground which is occupied by the present edifice. That parcel of ground together with a tract of about forty acres was given to the church by the original patentee, Col. Henry Beekman.



His daughter, Margaret, who married the illustrious Robert Livingston, gave to the nation ten stout hearted nation builders. Of them and theirs this congregation included Governor Morgan Lewis, the father of the public school system, Robert Livingston, the first chancellor of the state, administrator of the oath of office to President Washington and negotiator of the Louisiana Purchase; Edward Livingston, Minister to France and Secretary of State; Mrs. Tillotson, noted for philanthropies; Mrs. Montgomery, wife of the general who led the charge at Quebec and fell there; Colonel Henry Beekman Livingston and General John Armstrong, Secretary of War.

Many other notables have left an air of historic charm and devout consecration about the old church. There is a hearty welcome for any who may wish to worship under the inspiration of great associations. Services: Morning worship 11.00 A. M.; Evening service, 7.30 P. M.; Sunday school 10.00 A. M.

Pastor, the Rev. Frank D. Blanchard.



**ST. PAUL'S LUTHERAN CHURCH**

**Wurtemburg, N. Y.**

**E. J. HIMES, Pastor**

Bible School	-	-	10.00
Morning Worship	-	-	11.00
Luther League	-	-	7.30

Throughout the month of July services will be one-half hour earlier.

Historic old Wurtemburg Lutheran Church stands four miles east of Rhinebeck Village on a raise of ground that gives a fine view of the valley to the South and the Catskill Mountains on the West.

The congregation was organized in 1759 and a house of worship erected soon after. Part of the present edifice was built in 1802. It was enlarged and the steeple erected in 1861.

Services are held every Lord's Day morning and various week-day activities are held.

The church has a Men's Brotherhood, a Luther League, a Woman's Missionary Society and a Ladies Aid Society.

Come and worship with us.



*We ship*  
**VIOLET PLANTS**

to every State in the U. S. A.

NEW VIOLET

**Mrs. David Lloyd George**  
Send for free illustrated circular  
**RHINEBECK FLORAL CO.**  
North Beech Street  
RHINEBECK - NEW YORK

**T. & T. AUTO SALES**

**LINCOLN CARS      FORD TRUCKS      FORDSON TRACTORS**



**L. B. TREMPER, Mgr.**

Phone 353

**RHINEBECK, N. Y.**

*For*  
**COAL, FEED**  
**and LUMBER**

*Try*

**RHYNDERS**

Phone 358

**RHINEBECK, N. Y.**



Plan your vacation so that you are in Rhinebeck or vicinity at the time of

*The Big*  
**DUTCHESS  
COUNTY  
FAIR**

Aug. 29, 30, 31, Sept. 1, 2,  
1927

*Both Day and Night*

Big exhibits of Cattle, Horses, Sheep, Poultry, Fruit, Vegetables and all farm products. Wonderful Flower Show. Fine Dog Show. Big Auto exhibit.

HORSE RACING      BASEBALL  
DANCING and FIREWORKS every evening  
BIG MIDWAY

Free attractions twice daily in front of Grand Stand

# HUDSON AND ESSEX

SALES and SERVICE

**William E. Cook**

RHINEBECK, N. Y.

Tel. 381

---

## VONDY'S ICE CREAM PARLOR

"Every Flavor Meets With Favor"

**SCHRAUTH'S ICE CREAM**

The Standard for Fifty-Six Years

Page and Shaw's  
"Candy of Excellence"

Everything in Eats  
and Drinks to make  
the Summer Cooler  
and the Winter  
Warmer.

8 EAST MARKET STREET

Tel. 181-M

**RHINEBECK, N. Y.**

On the Corner

On the Square

Always on the Level

**A Well Stocked Hardware Store**

**PAINTS, VARNISH and BRUSHES**

**HOUSEHOLD GOODS**

**PLUMBING**

---

**Harry Smillie & Co.**

UPHOLSTERING, REFINISHING, DRAPER-  
IES, CUSHIONS, MATTRESSES

SPECIAL CABINET REPAIRING

Best Quality Materials Used.

Careful and Painstaking Work.

## John J. Hardie

110 E. Market St., Rhinebeck, N. Y.

Phone 203-J

Samples submitted

Estimates free

---

## WARREN F. FELLER

## Water Well Driller

ARTESIAN WATER SUPPLIES

PUMPS AND PUMPING EQUIPMENT

Telephone 26-F-7

RHINEBECK, N. Y.

---

## The Fragrant Violet

The Soil, also the Altitude of the Village of Rhinebeck, is well suited to the growing of Beautiful VIOLETS, the most fragrant flower of all. It gives employment to many people and is the principal industry of the village.

For more than a quarter of a century I have cultivated this flower of flowers, my specialty being the "Farquas," and I am prepared to furnish it in quantity, either whole-sale or retail.

Address communications to

**Francis Scoles**

Rhinebeck, N. Y.

## Enclosed Find Check

Do YOU pay your bills by the safe and easy  
check method

?

Your check acts automatically as a receipt—insures against loss of money carried, stored or sent—and is withall the easiest and best way of paying a bill, large or small.

Talk over with us the matter of opening an account in the old, reliable service-giving Rhinebeck institution.

*Safe Deposit Boxes for Rent*

The First National Bank  
of Rhinebeck, N. Y.



---

## Don't Write TELEPHONE

Telephone Service is now considered almost indispensable.

We will try to install your Telephone promptly, but a few days notice in advance will be advantageous to us as well as appreciated.

Why not give us your order now? Just write or call the office of

**Red Hook Telephone Co.**

Rhinebeck, N. Y.

JOHN TROY, Managing Director.

# Nye Downer

Successor to  
WILLIAM SCHUSSLER

## Rhinebeck BAKERY

BREAD

CAKE

PIES

---

## James Newman *TAXI*

Competent driver, reasonable rates. Large seven passenger Hudson sedan. Inquire at New York Central station, Rhinecliff, or Village of Rhinebeck.

Car for funerals and weddings.

Tel. Rhinebeck 247-R.

Service can be engaged by letter.

---

## See Us Before Ordering Elsewhere

for we will guarantee to reupholster your furniture to your satisfaction. No one can dispute the fact after seeing some of our work, that we make old furniture look like new. No trouble to please you with the varied assortment of designs we carry in Tapestries, Velours, Leathers, etc.

Also carry in stock a full line of Beds, Springs, Mattresses, Cots, etc, at lowest prices. Buy and sell Antiques.

## H. COLTON

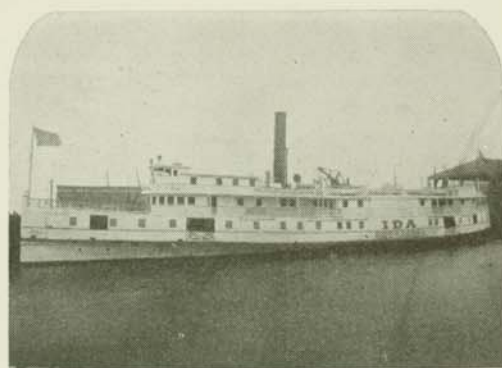
Cabinet Maker

Upholsterer

Telephone 349-M

31 East Market St.

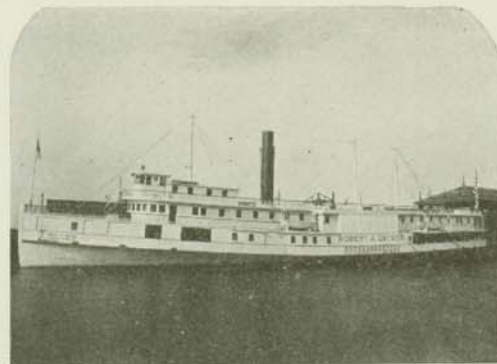
Rhinebeck, N. Y.



For a period of forty years, the Saugerties Evening Line has catered to the transportation needs of Rhinebeck and surrounding vicinity with a fast, daily overnight passenger and freight service from New York City.

## *The* Saugerties and New York Steamboat Company

Steamers leave Rhinecliff every evening except Saturday at approximately 7.30 p. m. Sailings from Pier 43, N. R., New York City daily except Sunday at 6 p. m. During July and August on Saturdays at 1 p. m.



# William Tieder

One of the most up-to-date Barber Shops in  
Northern Dutchess

Sanitary - and - Clean

Location: State road, near corner of East  
Market street

SPECIAL ATTENTION PAID TO  
LADIES' AND CHILDREN'S  
HAIR CUTTING

Phone 181-M

Opp. Beekman Arms

## *Rhinebeck Realty and Development Company*

11 Mill St., Rhinebeck, N. Y.

## TAILORING

OF EVERY DESCRIPTION

*also*

Cleaning, Dyeing, Pressing and Repairing  
Done at Reasonable Prices

"Always at Your Service"

### JULIUS MAYER

"The Tailor That Satisfies"

Rhinebeck, N. Y.

Phone 254-J

## Products of Quality

+

## Proper Installations

=

## Satisfied Customers



If you're not satisfied, I'm not. Whether  
it's a replacement job or new work, don't fail  
to get my estimate. I am in a position to in-  
stall and unconditionally guarantee any sort  
of

PLUMBING GOODS

HEATING APPARATUS

Steam, Vapor, Water and Warm Air.

DOMESTIC WATER SYSTEMS

Shallow and Deep Well.

SHEET METAL WORK

ROOF AND CONDUCTOR WORK

"QUIET MAY" OIL BURNERS

RANGES AND DOMESTIC WATER  
HEATERS



## C. E. SIPPERLEY

Phone 233

RHINEBECK, N. Y.

# INSURANCE

Fire and Automobile

41 Years of splendid  
service in this vicinity

**Willis J. Pells**

RED HOOK

RHINEBECK



**CHAS. ORTUNG & SON**

Paper Hanging

RHINEBECK

Signs

## William C. Haines

Representative

Metropolitan Life Insurance Co.

Welfare and Nursing Service extended to  
Policy Holders

IF IN NEED PHONE 12-M

Office and Residence 55 Chestnut St.  
RHINEBECK, N. Y.

# Valentine Ritter

Corner Shoe Store

## Footwear of All Kinds

Repairing

Hosiery



The Home of Good Furniture

**Rhinebeck, N. Y.**

Special attention to Boarding House Keepers  
As we want to supply your needs.

*Our Slogan*

**"Furniture of the Best, Price Below the Rest."**

FOR

## Farms, Estates, Homes, or Acreage

SEE

Bates Realty and Insurance Co.

29 E. MARKET ST.

**Insurance**  
We Buy Ashes

**Real Estate**  
We Sell the Earth



## Donald W. Haskins

"The Acorn Store"

"Buy with Assurance—Don't Shop in Doubt"

Phone 271 Rhinebeck, N. Y.

Always at Your Service

## RHINEBECK GROCERY

---

### *The Cheerful Drug Store*

A reliable place to purchase drugs or have your prescriptions filled.

Where you will find your favorite Perfume, Face Powder, Creams and Lotions.

In the candy department your choice of Whitman's, Belle Meads, Cynthea Sweets and Park and Tilfords.

Where Eastman Kodaks and Films may be purchased and Films Developed and Printed.

Where the Soda is the best ever and the fountain clean and sanitary.

D. W. SCHERMERHORN, Prop.

Next to The Beekman Arms

---

## J. C. Hamlin Estate

---

Gordon Silk Hosiery

Forest Mills Underwear

Radium Silks

Interwoven Socks

Ladies Neckwear

---

Telephone 231-R

## You can buy LUMBER at most any price---

---

But you cannot buy quality Lumber—the only Lumber you can afford to use to build your home—for any less than we are selling it. Get our prices, and remember we guarantee the quality.

"Build a Home First"

---

## J. S. GIBSON

Lumber

Feed

Phone 5-F-2

Rhinebeck, N. Y.

---

## *Consult A Specialist*

for

# INSURANCE

My Specialties are

AUTOMOBILE LIABILITY

PROPERTY DAMAGE

WORKMEN'S COMPENSATION

EMPLOYERS' LIABILITY

---

**FRANK L. ASHER, Agent**

**The Travelers Insurance Co.**

Telephone Building

Rhinebeck, New York

**Put Your Shoulder To The Wheel**  
OF BUSINESS AND LET A BANK AC-  
COUNT BE THE POWER THAT TURNS IT.

---

## Rhinebeck Savings Bank

Rhinebeck, N. Y.

---

Monday evening 6 to 8. All days, except Sat-  
urday, 9.30 A. M. to 3 P. M. Saturday 9.30  
to 12 M.



## CENTRAL HUDSON GAS & ELECTRIC CORPORATION

11 MILL STREET Tel. 700  
RHINEBECK, N. Y.

---

## STARR THEATRE

Opposite Post Office  
RHINEBECK



The Best in Photoplays  
The Latest News Reels  
Comedies Unexcelled

# Hub Garage

Rhinebeck, N. Y.

Phone 42

We offer you the best service available for  
your car—

Storage Facilities  
Day and Night Service  
Tires, Tubes and Accessories  
Complete Machine Shop  
Cylinder Grinding  
Expert Mechanics

Radio Supplies

Electrical Work

---

## Baker Drug Store

MIRROR CANDIES—Pronounced the purest

REXALL AGENCY

UNITED CIGAR STORE AGENCY

FILMS DEVELOPED and PRINTED

PRESCRIPTIONS A SPECIALTY

Phone 382



## JOE'S RESTAURANT

Phone 181-R Rhinebeck, N. Y.

Famous for serving home cooked food.  
Reasonable prices and courteous attention.

A la Carte service unexcelled. Home folks  
and the knowing traveling public have placed  
their stamp of approval on JOE'S for the past  
seven years.

A home restaurant that caters the year  
round.

# P. J. Sullivan

## *Taxi Service*

Reasonable rates. A reliable licensed driver.  
Seven passenger Hudson sedan.

In coming to Rhinebeck inquire for Patsy Sullivan at the station of the New York Central at Rhinecliff or in the Village of Rhinebeck, N. Y.

Tel. Rhinebeck 23

---

### Kingston-Rhinebeck Ferry

At the Main Gateway  
of the Catskills

—  
16 HOUR SERVICE DURING THE  
TOURING SEASON

—  
Time tables mailed upon application.

—  
Rhinebeck & Kingston Ferry Co., Inc.  
Kingston, N. Y.

---

## Carpenter Work

Let me give you an estimate on the cost of that new building or on your repair work. Perhaps I can save you money. I have had years of experience in all kinds of carpentry work and building and would like to serve you.

Call Rhinebeck 237-W  
for an estimate on any job.

**HANFORD MARQUET**  
Rhinebeck, N. Y.

# Philmore E. Decker

## *Contractor and Builder*

ESTIMATES FURNISHED

Phone 207-R

RHINEBECK, N. Y.



## UNDERTAKERS

Rhinebeck, N. Y.

AMBULANCE SERVICE  
Anytime - Anywhere

Telephone

22-F-2 - 203-M - 371-J

New York Office, 138 East 57th St.  
Telephone: Plaza 7891

---

COMING OR GOING

# STOP!

for that

## GOOD GULF GAS

REMINGTON TIRES

and SUPPLIES

**JOHN D. LOWN**

Tel. 246

RHINEBECK, N. Y.

# Fire Insurance

---

**M. V. B. SCHRYVER**

Telephone Building  
RHINEBECK, N. Y.

---

## LUMBER and BUILDING MATERIALS

---

FLOUR, FEEDS and GRAIN

---

**V. G. DEMAREST**

Phone 335-F-3

---

Merritt H. Traver

Phone 208-W

Rhinebeck, New York

## Groceries Provisions

We deliver your order free to your own door

# Wm. Carroll & Son



Furniture and Housefurnishings



Telephone

Store 1-M      Residence 1-J  
RHINEBECK, N. Y.

---

## The Haen Jewelry Shop

"The Gift Shop of Northern Dutchess"

Optical Work in All Its Branches

Specialists in Watch Repairing

Phone 8-M      Est. 1884      Rhinebeck, N. Y.

---



The Advertising Medium of Northern  
Dutchess

READ BY 6,000

GET OUR PRINTING PRICE FIRST

Telephone 500—Rhinebeck

JACOB H. STRONG, Proprietor



Work promptly  
attended to.

Estimates  
Furnished

Ask

## CHARLES A. FRALEIGH

East Market Street Telephone 39-R  
RHINEBECK, N. Y.

## HENRY SCHAAD & SON

Choice

## MEATS and POULTRY

40 East Market Street  
Telephone 256-R  
RHINEBECK, N. Y.

L. E. KIME

## Rhinebeck Cash Market

Dutchess County Pork, Veal, Lamb, Poultry  
Prime Western Beef, Smoked Meats

Special Prices and attention to Boarding  
Houses, Restaurants, etc.

## Rhinebeck Garage, Inc.

Rhinebeck, N. Y.

Tel. 258



## GENERAL REPAIRS

Ford Repairs at Flat Rate Prices

THE TIRE STORE OF RHINEBECK  
TIRES ALL SIZES



## Sales and Service

Batteries repaired, recharged and rented.  
Tydol Gas and Veedol Oil  
Largest Gas Station in Rhinebeck  
RADIO SETS AND SUPPLIES



## Sales and Service

C. A. Hartshorn

C. B. Hartshorn

# NEW YORK STORE

DRY GOODS  
GENTS FURNISHINGS  
LADIES DRESSES  
MILLINERY

Special Low Prices to Boarding Houses

FRIEDMAN'S

# NEW YORK STORE

35 E. Market St.

Rhinebeck

# RADIO

ACCESSORIES  
BATTERY CHARGING  
REPAIRING

Bremer-Tulley Receiving Sets  
A complete line of

ELECTRICAL HOUSEHOLD APPLIANCES

# W. A. MILLER

64 Chestnut St.

Rhinebeck, N. Y.

# RHINEBECK AERODOME

An Open Air Motion  
Picture Theatre showing  
Metro - Goldwyn - Mayer  
Productions

PICTURES NEARLY EVERY EVENING

SOME 1927 SEASON FEATURES

Tell It To the Marines, The Fire Brigade, The  
Scarlet Letter, The Red Mill, Rookies, etc.

# TAXI

In coming to Rhinebeck for the summer engage the services of E. Sheak. All rates reasonable.

Either by train or boat, services can be engaged by letter. Rates by the hour or day.

Address: E. Sheak, Rhinebeck, N. Y., or ask for E. Sheak at the Village or Boat Landing or New York Central Railroad Station.

# COMMUNITY GARAGE

Situated in the Village of Rhinebeck. An up-to-date Garage—service day or night.

If you come to spend the summer in the country let us look after your car. All rates standard and prompt service guaranteed.

The life of your car depends upon the service you get.

Tel. 244 Rhinebeck, N. Y.

# Fyr Fyter Service

The most reliable Fire Extinguishers in the world.

Equip your home or car today for tomorrow you may burn.

Prepare for the worst by installing the BEST.

# L. L. STEWART

Tel 235-R

Rhinebeck, N. Y.

# Ernest Steenburgh

## ELECTRICAL CONTRACTOR

Westinghouse Mazda Lamps  
New Standard Line--5 Lamps Replace 45

42 E. Market St., Rhinebeck, N. Y.

TELEPHONES: Office 256-J; Residence 19-M

JOS. G. SCOTT  
Phone 3-F-6

JOS. J. BUZON  
Phone 40-F-12

## Scott Taxi Service

Phone 350, Hub Garage

Rhinebeck, N. Y.

Will meet your train on request. We give service, not a promise.

COMPETENT DRIVERS

Up-state information on trains local and long distance gladly given.

Modern Homes  
Farm Buildings and Equipment

## IRVING J. STALEY

General Contractor

Telephone 192-M

Rhinebeck, N. Y.

Repairing "Build right the first time" Remodeling

## See the HUDSON by Daylight



ON your journey to and from Rhinebeck plan to include this "Finest of All River Trips." Those traveling via New York especially will find ample reward in the enthralling beauty of the Highlands.

DAILY INCLUDING SUNDAY - May 21st to Oct. 16th

Famous Flyers afford the utmost in travel comfort. Beautiful salons, spacious shaded decks, restaurants and salaried orchestras. Rhinebeck is easily reached by Day Line steamers leaving New York daily at 9:00 A. M. arriving Poughkeepsie 1:30 P. M., Kingston Point 2:25 P. M. and Albany 6:45 P. M. Daily steamer also leaves Albany 9:00 A. M., arriving Kingston Point 1:00 P. M., Poughkeepsie 2:00 P. M.

## Hudson River Day Line

Debrosses Street Pier, New York

## Harry G. Miller

Electrical Contractor

Rhinebeck, N. Y.

Phone 223-M

Come in and see the electric G. E. Cleaner for \$49.00 and this includes six attachments. General Electric Motor. No oiling. Ball bearing packed in lubricant.

*Guaranteed by General Electric for  
one year from date of purchase*

## Horton No. 34 Electric Washing Machine

It washes delicate fabrics and lingerie silks, fine laces as well as it washes the heaviest garments.