

Hudson River Historic District
New York: Dutchess and Columbia Counties

847079		C	NC
RB 6069	Buildings	1	1
Dutchess	Structures		
	Sites		
	Objects		

Function(s) : education

Property Name : Ellerslie or Morton Schoolhouse (also see Ellerslie: 576327 et al)

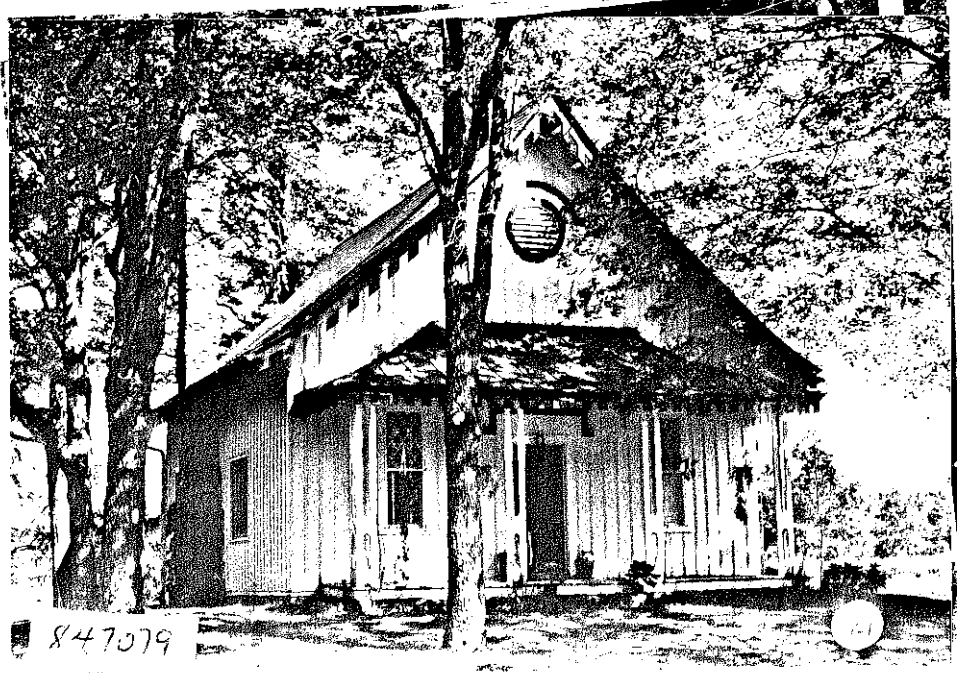
Location : Morton Rd. and Mill Rd.; northwest corner.

school	education, schoolhouse		
c. 1840's	C	Roll	
stone [F]	wood [W]	asphalt [R]	[O]

Description: The one story, gable front frame schoolhouse in the Romantic/ Picturesque style is attributed to A.J. Davis. The building features: board and batten siding, diamond-pane double hung sash windows and 1/1 double hung sash windows that are regularly placed. The front (south) elevation is three-ranked with a central entry; it is distinguished by a hipped-roof verandah with bargeboard detailing and flat pierced support posts; the verandah roof is composed of standing seam metal; the verandah shelters an entry with replacement door, simple surround and hood molding with label stops. The building is surmounted by an asphalt shingle roof with flared edges, decorative bargeboard, broad overhanging eaves, exposed rafters and purlins; the front gable field includes a louvered oculus with hood. The east elevation includes four pairs of 1/1 double hung sash windows with flat surrounds; a single hood spans all of the windows; the west side roof is symmetrically pierced by two hipped dormers with paired six-pane casement windows. The north elevation includes a large replacement window with multiple panes; a tall external chimney of stone and mortar is also found on the north elevation. The rear of the building includes an enclosed lean-to porch which shelters the secondary entry.

garage	secondary structure		
c. 1960's	NC	Roll	---

Description: The garage, though it is built after the period of significance, is contextually designed in accordance with the materials, style and massing of the schoolhouse.



847079